

vtech®

Parent's Guide

Disney

GO!GO!
Smart Wheels®

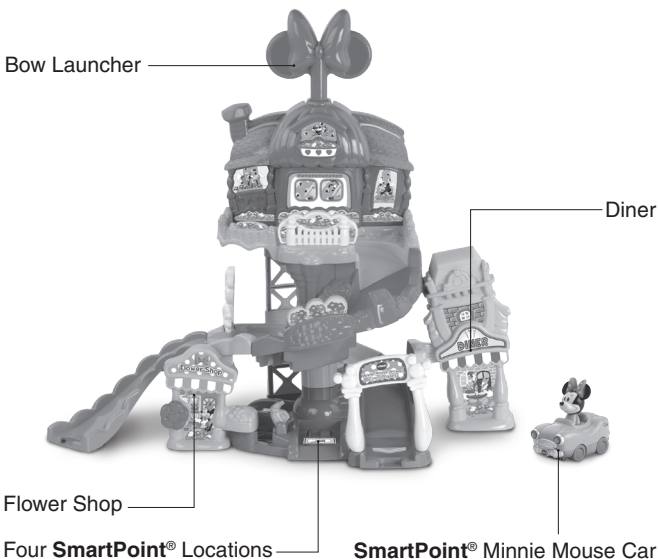
Minnie Mouse Around Town Playset



INTRODUCTION

Thank you for purchasing the **Go! Go! Smart Wheels® Minnie Mouse Around Town Playset!**

Hop into the Car with Minnie Mouse and take a magical ride around town! Press the bow to launch the car down the spiral ramp. Interactive **SmartPoint®** locations activate fun songs, sounds and phrases as your little one cruises around town with Minnie Mouse!



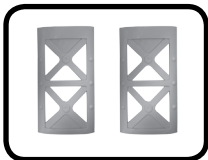
INCLUDED IN THIS PACKAGE



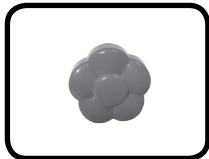
One **SmartPoint**[®]
Minnie Mouse Car



One white fence



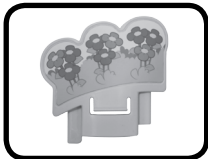
Two track supports



One flower



One flower shop wall



One flower plate



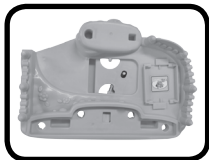
One spiral base 1



One spiral ramp 2



One spiral ramp 3



One top level platform 4



One diner wall
support



One diner wall



One bow launcher



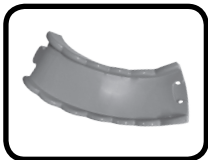
One top house wall



One **SmartPoint**[®] launcher track



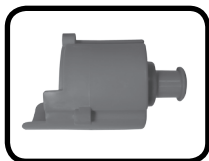
One gate arm



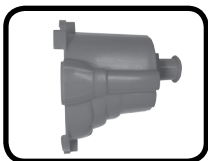
One slide ramp



One arch



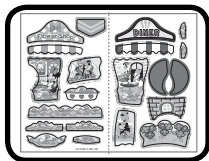
One bracket 1



One bracket 2



Eight screws



One label sheet

- One parent's guide

WARNING:

All packing materials such as tape, plastic sheets, packaging locks, removable tags, cable ties and packaging screws are not part of this toy, and should be discarded for your child's safety.

NOTE:

Please keep this parent's guide as it contains important information.

ATTENTION :

Pour la sécurité de votre enfant, débarrassez-vous de tous les produits d'emballage tels que rubans adhésifs, feuilles de plastique, attaches, étiquettes et vis d'emballage. Ils ne font pas partie du jouet.

NOTE :

Il est conseillé de conserver ce guide des parents car il comporte des informations importantes.

**CAUTION:****Adult assembly required.**

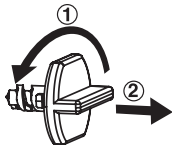
This package contains small screws. For your child's safety, do not let your child play with the toy until it is fully assembled.

**ATTENTION :****Ce jouet doit être assemblé par un adulte.**

Ce jouet contient des petites vis. Pour la sécurité de votre enfant, ne pas le laisser jouer avec le jouet tant que ce dernier n'est pas complètement assemblé par un adulte.

Unlock the packaging locks:

- ① Turn the packaging lock counterclockwise several times.
- ② Pull out and discard the packaging lock.

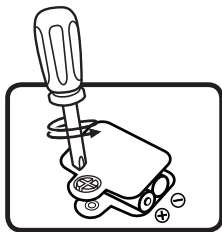


GETTING STARTED

BATTERY INSTALLATION

Car

1. Make sure the unit is turned **OFF**.
2. Locate the battery cover on the bottom of the **Car**. Use a screwdriver to loosen the screw.
3. Install 2 new AAA (AM-4/LR03) batteries following the diagram inside the battery box. (The use of new alkaline batteries is recommended for maximum performance).
4. Replace the battery cover and tighten the screw to secure the battery cover.

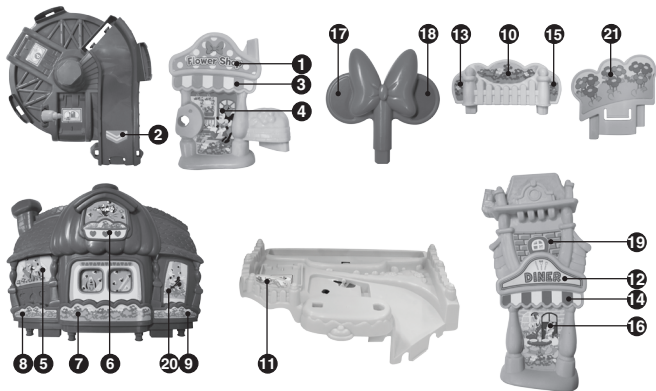
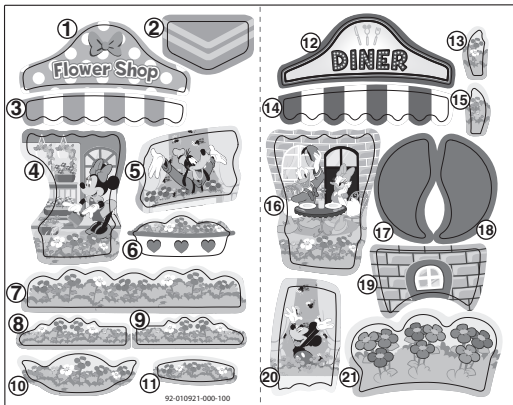


BATTERY NOTICE

- Use new alkaline batteries for maximum performance.
- Use only batteries of the same or equivalent type as recommended.
- Do not mix different types of batteries: alkaline, standard (carbon-zinc) or rechargeable, or new and used batteries.
- Do not use damaged batteries.
- Insert batteries with the correct polarity.
- Do not short-circuit the battery terminals.
- Remove exhausted batteries from the toy.
- Remove batteries during long periods of non-use.
- Do not dispose of batteries in fire.
- Do not charge non-rechargeable batteries.
- Remove rechargeable batteries from the toy before charging (if removable).
- Rechargeable batteries are only to be charged under adult supervision.

LABEL APPLICATION

Please securely stick the labels to the playset as indicated below:



ASSEMBLY INSTRUCTIONS

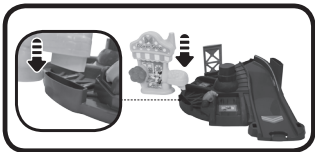
Minnie Mouse Around Town Playset

With the **Go! Go! Smart Wheels® Minnie Mouse Around Town Playset**, safety comes first. To ensure your child's safety, adult assembly is required.

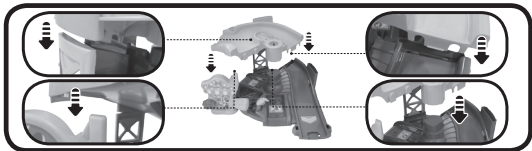
1. Locate **Spiral Base 1** and insert one of the **Track Supports**, as shown below.



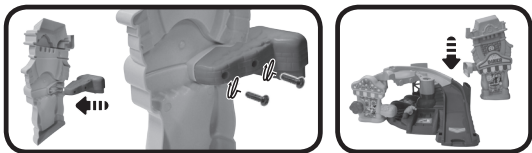
2. Insert the **Flower** into the **Flower Shop Wall**, then insert the **Flower Shop Wall** into **Spiral Base 1**.



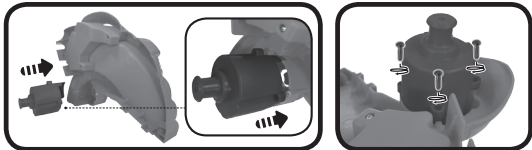
3. Place **Spiral Ramp 2** onto the center pole of **Spiral Base 1**. Then, adjust **Spiral Ramp 2** so the slots fit snugly onto the **Flower Shop Wall**, **Spiral Base 1**, and the **Track Support**, as shown below.



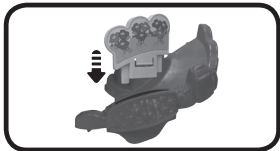
4. Fasten the **Diner Wall Support** to the **Diner Wall** with two **Screws**, then insert into the slot on **Spiral Base 1**, as shown below.



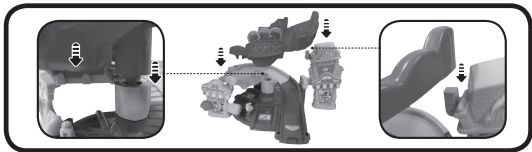
5. Insert **Bracket 1** into **Spiral Ramp 3** and fasten with three **Screws**.



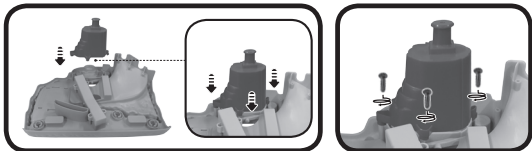
6. Insert the **Flower Plate** into **Spiral Ramp 3**. You will hear a “click” sound to indicate the pieces are secure.



7. Place **Spiral Ramp 3** over the center pole of **Spiral Base 2**. Then, adjust **Spiral Ramp 3** so that the slots on the bottom fit snugly into the **Diner Wall** and the **Flower Shop Wall**, as shown below. You will hear a “click” sound to indicate the pieces are secure.



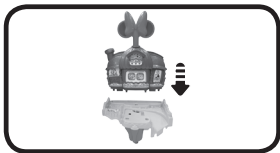
8. Fasten **Bracket 2** to **Top Level Platform 4** with three **Screws**, as shown below.



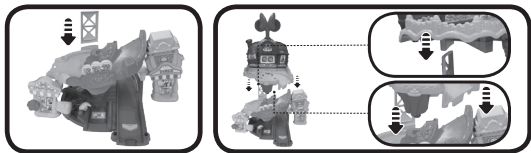
9. Insert the **Bow Launcher** into the **Top House Wall**, as shown below.



10. Connect the **Top House Wall** to **Top Level Platform 4**. You will hear a “click” sound to indicate the pieces are secure.



11. Insert the remaining **Track Support** into the slot on **Spiral Ramp 2**. Then, connect the bottom slots of **Top Level Platform 4** to the **Track Support** and **Spiral Ramp 3**, as shown below.



12. Insert the **SmartPoint® Launcher Track** and the **White Fence** into **Top Level Platform 4**, as shown below.



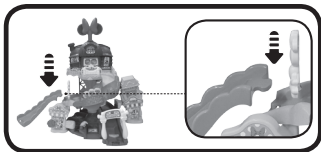
13. Insert the **Gate Arm** into the slot on **Spiral Ramp 2**, as shown below.



14. Insert the **Arch** into the slots at the front of **Spiral Base 1**, as shown below.



15. Connect the **Slide Ramp** to **Spiral Ramp 2**, as shown below.

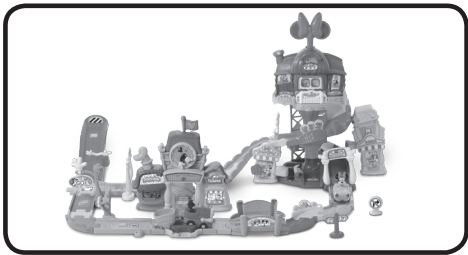


Once you've completed the above steps, you are ready to play! You can connect these pieces to other **Go! Go! Smart Wheels®** playsets and tracks (each sold separately).



EXPAND & EXPLORE



Connect to the **Go! Go! Smart Wheels® Mickey Mouse Choo-Choo Express** (as shown below) or other **Go! Go! Smart Wheels®** playsets (each sold separately) to expand the **Minnie Mouse Around Town Playset** and inspire creativity!

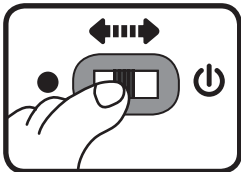


PRODUCT FEATURES

Car

1. On/Off Switch

To turn the unit **On**, slide the **On/Off Switch** to the **On**  position. To turn the unit **Off**, slide the **On/Off Switch** to the **Off**  position.



2. Automatic Shut Off

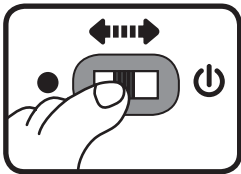
To preserve battery life, the **Car** will automatically power down after approximately 90 seconds without input. The unit can be turned on again by pressing Minnie Mouse, pushing the **Car** quickly or triggering a **SmartPoint**[®] location.

NOTE: This product is in Try-Me mode in the packaging. After opening the package, turn the **Car** off and on again to proceed with normal play. If the unit repeatedly powers down while playing, we suggest changing the batteries.

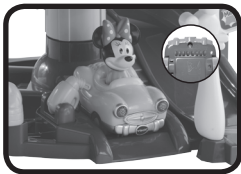
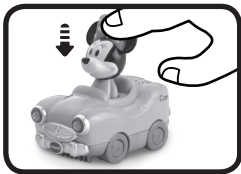
ACTIVITIES

Car

1. Slide the **On/Off Switch On**. You will hear a song, fun phrases and sounds. The lights will flash with the sounds.



2. Press Minnie Mouse to hear fun sounds, songs and phrases. The lights will flash with the sounds.
3. Push the **Car** to hear fun sounds and melodies. While a melody is playing, continue pushing the **Car** to add in fun sounds on top of the melody. The lights will flash with the sounds.
4. For added fun, the **Car** interacts with the **Go! Go! Smart Wheels® Minnie Mouse Around Town Playset**. Simply put the **Car** on one of the playset's four **SmartPoint®** locations to see the **Car's** lights flash and hear fun sounds, short tunes and phrases. The **Car** even interacts with other **Go! Go! Smart Wheels®** playsets (each sold separately).



ACTIVITIES

Minnie Mouse Around Town Playset

1. Place the **Car** or any **SmartPoint**® vehicle (each sold separately) on any of the playset's four **SmartPoint**® locations to trigger fun sounds, songs or phrases.
2. Put the **Car** on the **SmartPoint**® **Launcher Track** on the **Top Platform**, then press the **Bow Launcher** to launch the **Car** down the **Spiral Ramp**.
3. Move the **Gate Arm** side to side to let the **Car** pass through.



Sing-Along Songs

1. Won't you come and shop with me?
Shop with me, shop with me?
Won't you come and shop with me?
We'll have so much fun!
2. Hickory dickory dock,
The mousey checked the clock,
The clock struck one, what to do?
Visit with friends and shop!
3. I love my friends and driving 'round
Come with me, and cruise through town.

Melody List

1. A Tisket, A Tasket
2. Buffalo Gals
3. Good Morning Merry Sunshine
4. Hail, Hail, The Gang's All Here
5. Looby Loo
6. Polly Wolly Doodle

CARE & MAINTENANCE

1. Keep the unit clean by wiping it with a slightly damp cloth.
2. Keep the unit out of direct sunlight and away from any direct heat source.
3. Remove the batteries when the unit will not be in use for an extended period of time.
4. Do not drop the unit on hard surfaces and do not expose the unit to moisture or water.

TROUBLESHOOTING

If for some reason the unit stops working or malfunctions, please follow these steps:

1. Please turn the unit **OFF**.
2. Interrupt the power supply by removing the batteries.
3. Let the unit sit for a few minutes, then replace the batteries.
4. Turn the unit **ON**. The unit should now be ready to play again.
5. If the product still does not work, replace with an entire set of new batteries.

If the problem persists, please call our Consumer Services Department at 1-800-521-2010 in the U.S. or 1-877-352-8697 in Canada, or by going to our website at vtechkids.com and filling out our Contact Us form located under the Customer Support link. A service representative will be happy to help you.

IMPORTANT NOTE:

Creating and developing **VTech**[®] products is accompanied by a responsibility that we at **VTech**[®] take very seriously. We make every effort to ensure the accuracy of the information, which forms the value of our products. However, errors sometimes can occur. It is important for you to know that we stand behind our products and encourage you to call our Consumer Services Department at 1-800-521-2010 in the U.S. or 1-877-352-8697 in Canada, or by going to our website at vtechkids.com and filling out our Contact Us form located under the Customer Support link with any problems and/or suggestions that you might have. A service representative will be happy to help you.

Supplier's Declaration of Conformity

Trade Name:	VTech [®]
Model:	5218
Product Name:	Minnie Mouse Around Town Playset
Responsible Party:	VTech Electronics North America, LLC
Address:	1156 W. Shure Drive, Suite 200, Arlington Heights, IL 60004
Website:	vtechkids.com

Note:

This equipment has been tested and found to comply with the limits for a Class B digital device, pursuant to Part 15 of the FCC Rules. These limits are designed to provide reasonable protection against harmful interference in a residential installation. This equipment generates uses and can radiate radio frequency energy and, if not installed and used in accordance with the instructions, may cause harmful interference to radio communications. However, there is no guarantee that interference will not occur in a particular installation. If this equipment does cause harmful interference to radio or television reception, which can be determined by turning the equipment off and on, the user is encouraged to try to correct the interference by one or more of the following measures:

- Reorient or relocate the receiving antenna.
- Increase the separation between the equipment and receiver.
- Connect the equipment into an outlet on a circuit different from that to which the receiver is connected.
- Consult the dealer or an experienced radio/TV technician for help.

Caution: Changes or modifications not expressly approved by the party responsible for compliance could void the user's authority to operate the equipment.

THIS DEVICE COMPLIES WITH PART 15 OF THE FCC RULES. OPERATION IS SUBJECT TO THE FOLLOWING TWO CONDITIONS:
(1) THIS DEVICE MAY NOT CAUSE HARMFUL INTERFERENCE, AND
(2) THIS DEVICE MUST ACCEPT ANY INTERFERENCE RECEIVED, INCLUDING INTERFERENCE THAT MAY CAUSE UNDESIRE OPERATION.

CAN ICES-3 (B)/NMB-3(B)

**Visit our website for more
information about our products,
downloads, resources and more.**

vtechkids.com

Read our complete warranty policy online at
vtechkids.com/warranty

